

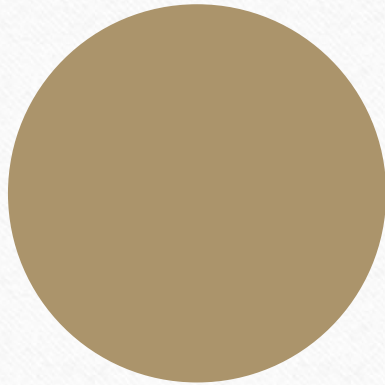
Suicide Prevention

- ✧ Washington County Data
- ✧ Firearm Safety Campaign
- ✧ Resources For Your Clientele

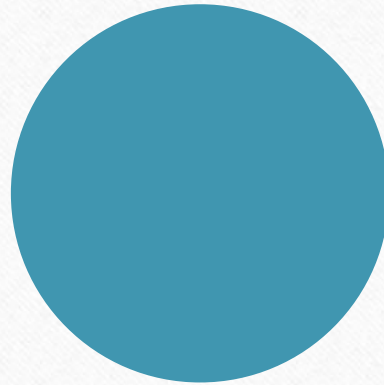
Washington County Data

- Rate of deaths by suicide is 14.5 per 100,000 residents (highest in the State) - Maryland Vital Statistics Annual Report 2020
(<https://health.maryland.gov/vsa/Documents/Reports%20and%20Data/Annual%20Reports/2020Annual.pdf>)
- We know that over 50% of suicide deaths nationwide involve a firearm. Wash Co 2003-2017 data reveal that 53% of suicide deaths involved a firearm.
- Nationwide white middle-aged men account for approximately 70% of all deaths by suicide due to the method of choice. (<https://afsp.org/suicide-statistics/>)

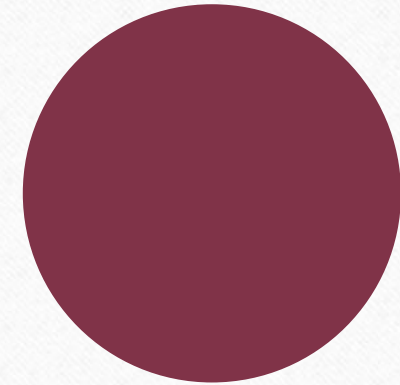
Why do we focus so heavily on firearms safety?



- The ACUTE phase of a crisis is typically brief. Most reported less than 10 minutes between deciding and acting.



- While most suicide attempts involve other methods (medications, suffocation, or sharps), 90% of attempts with firearms are fatal.



- The #1 recommendation is to increase time and distance between someone's thought and the ability to act using a lethal method.

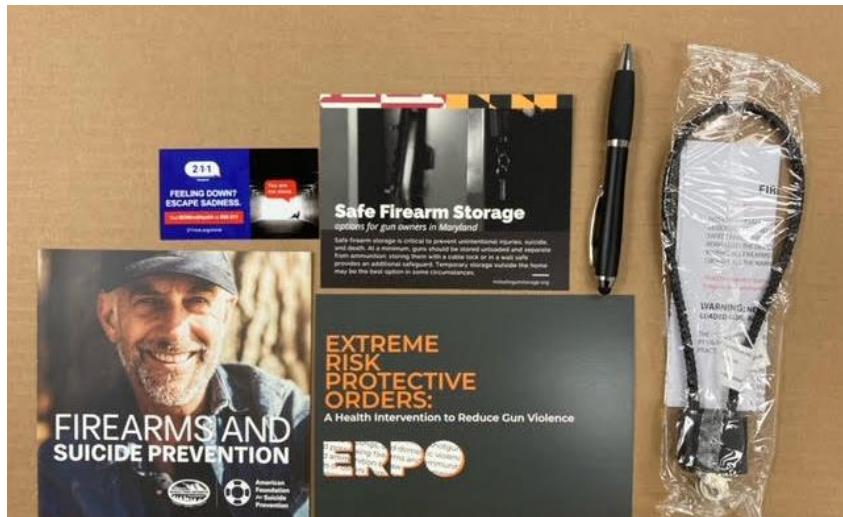
Washington County's Response



- Public Awareness
 - Safe storage - locks, ERPO, voluntary safe storage, etc.
 - Other resources - 211, crisis response, mental health providers and the website.
www.washcosuicideprevention.org
- Engaging with key partners
 - Law Enforcement/Crisis response/EMS
 - Mental Health Providers
 - Gun Shops/Pawn Shops
- Clinical Training
 - Clinicians - Recognizing and Responding to Suicide Risk
 - Counseling on Access to Lethal Means
- Community Training
 - Mental Health First Aid
 - Talk Saves Lives
- Suicide Prevention Workgroup and Suicide Prevention and Awareness Network annual meeting



Contents of the safe storage bags that have been given out in our community.



Other giveaway items available.

Safe storage items that have been distributed in the community

New projects starting in FY23

Resource Guide

- Decrease stigma
- Share information about various types of mental healthcare
- Share information about local providers/resources

Caring Contacts

- Postcard to follow up with individuals after they experienced a mental health crisis

3 Simple ways YOU can help !

Distribute bags with gun locks/safety information

Training for your staff or consumers

Join the workgroup

Contact information

✉ Washington County Mental Health Authority

339 E. Antietam Street, Suite 5

Hagerstown, MD 21740

💻 brookek@wcmha.org

☎ 301-739-2490 X112



www.washcosuicideprevention.org